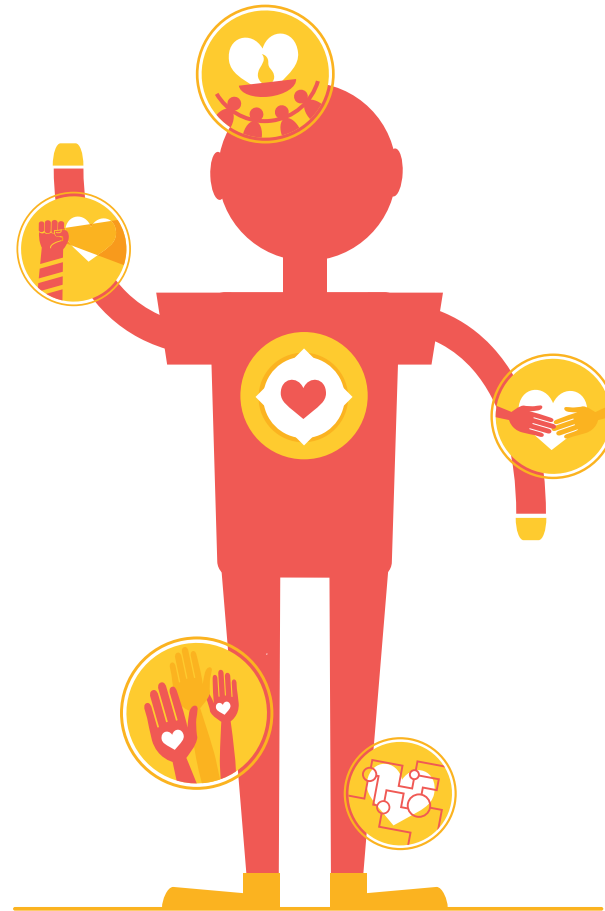




### SOCIAL JUSTICE

*Over time, First Unitarian will become a “beacon of light” for social justice.*

- I. Strengthen existing, long-standing Social Justice efforts by broadening and deepening involvement throughout the congregation.
- II. Enhance and leverage leadership experience within existing Social Justice programs and the Social Justice Council.
- III. Refine and evaluate the process to select a Social Justice focus issue.
- IV. Engage in strategic partnerships to broaden program impact.
- V. Develop and encourage ways for First Unitarian to “walk our talk.”



### VOLUNTEER DEVELOPMENT

*First Unitarian will create a systematic approach to skills and leadership development and will teach each program to recruit, train, and manage volunteers.*

- I. Develop intentional volunteer training and management to support church programs and enhance individual skills.
- II. Extend knowledge and training throughout the church.



### RELIGIOUS EDUCATION

*First Unitarian will build an RE Program that is loved by our children and youth, highly valued by parents, and well-supported by the congregation.*

- I. Build up the staff and volunteer capacity of the RE program.
- II. Tailor our RE program to meet the needs of 21st century families.
- III. Strengthen connections between the sanctuary and the RE program.
- IV. Improve Communications.



### COMMUNICATION TECHNOLOGY

*A variety of communication tools and comprehensive, updated information will be easily accessible to church members, leaders, and staff to assist in bringing together groups of all ages and interested in support of each other and the larger community in service of the mission of the church.*

- I. Improve the church website to function as an information clearinghouse for all church programs and activities.
- II. Grow our knowledge and use of social media in support of church programs.
- III. Invest in communications infrastructure to keep us up-to-date and effective.



### SOCIAL BONDS

*We will create a set of linked social communities of various sizes and intensities, such that those who are a part of our church, in every age and condition of life, have the opportunity to feel safe, make friends, become leaders, forge bonds with those of similar interests, and contribute to and benefit from our caring community.*

- I. Build a central repository for information and organizational support.
- II. Develop standard procedures for starting new groups.
- III. Provide year-round social bonding opportunities, especially during lulls in the program calendar.
- IV. Enhance a culture of inclusion and action to initiate and support social bonds.